

Guidelines for Transcribing Knit and Crochet Patterns, 2024



Developed Under the Sponsorship of the
Braille Authority of North America

Published by
The Braille Authority of North America

©2024 by The Braille Authority of North America
All rights reserved.

This material may be downloaded and printed, but not altered or sold.

The mission and purpose of the Braille Authority of North America are to assure literacy for tactile readers through the standardization of braille and/or tactile graphics. BANA promotes and facilitates the use, teaching, and production of braille. It publishes rules, interprets, and renders opinions pertaining to braille in all existing codes. It deals with codes now in existence or to be developed in the future, in collaboration with other countries using English braille. In exercising its function and authority, BANA considers the effects of its decisions on other existing braille codes and formats; the ease of production by various methods; and acceptability to readers.

For more information and resources, visit www.brailleauthority.org/.

Braille Authority of North America (BANA) Members

Alternate Text Production Center of the California Community Colleges
(ATPC)

American Council of the Blind (ACB)

American Foundation for the Blind (AFB)

American Printing House for the Blind (APH)

Association for Education and Rehabilitation of the Blind and Visually
Impaired (AER)

California Transcribers and Educators for the Blind and Visually
Impaired (CTEBVI)

Canadian National Institute for the Blind (CNIB)

CIDI (Center for Inclusive Design and Innovation)

Clovernook Center for the Blind and Visually Impaired (CCBVI)

Hadley

National Braille Association (NBA)

National Braille Press (NBP)

National Federation of the Blind (NFB)

National Library Service for the Blind and Print Disabled (NLS)

Perkins School for the Blind

Associate Members

Council of Schools and Services for the Blind (COSSB)

Crawford Technologies

Horizons for the Blind

Allyant

Table of Contents

Introduction	v
Guidelines for Transcribing Knit and Crochet Patterns	1
1.1 Pattern Guidelines	1
2.1 Knit Abbreviations	2
3.1 Crochet Abbreviations	4
4.1 Braille-Specific Guidelines	4
5.1 Formatting Guidelines	5
6.1 Knit and Crochet Chart Patterns	6

Introduction

The development of the BANA Crafts and Hobbies Technical Committee arose from a need to standardize the braille transcription of instructions for various crafts and hobbies. This volume contains guidelines for the transcription of knit and crochet patterns.

Prior to the writing of these guidelines, a survey was conducted with braille readers who knit and crochet to determine their preferences for formatting, abbreviations, use of numeric and grade 1 indicators, and transcription of chart patterns. The Committee compiled their answers from the survey and created these guidelines based upon the results.

The Braille Authority of North America has issued this revised edition of the *Guidelines for Transcribing Knit and Crochet Patterns* to integrate the use of current braille-related terminology, to show the braille examples in Unified English Braille, and to reference the latest edition of *Braille Formats: Principles of Print-to-Braille Transcription*. References to “UEB §” pertain to the most recent version of *The Rules of Unified English Braille*. The guidelines themselves remain largely unchanged, with the following exceptions:

- 4.1.1 has been clarified to indicate that current rules for contraction usage are to be followed.
- 4.1.2 has been removed; grade 1 symbol indicators should be used when K and P are standing alone, in accordance with UEB §2.6.

BANA Crafts and Hobbies Technical Committee

Camille Caffarelli, Chairperson 2011–2014

Marcetta Ponzio, Chairperson 2007–2011

Lorraine Banks

Melissa Hirshson

Jill Pariso

Example 1-2: Use Abbreviations as in Print

K1, p2 (rep until end of row).

1.1.8 Accepted and common abbreviations and their meanings are shown in the tables below to assist transcribers if they are not familiar with knitting or crocheting abbreviations.

2.1 Knit Abbreviations

2.1.1 **Note:** The following list of abbreviations is not universal or exhaustive. Any of them may be shown in print in upper- or lowercase letters, with or without a period. *Follow print.*

Stitch Abbreviation	Meaning
approx	approximately
beg	beginning
bl	block
BO	bind off
C3L	cable 3 left
CC	contrasting color
CO	cast on
Cr3R	cross 3 right
cont	continue
Dec	decrease(ing)
dpns	double pointed needles
EOR	every other row
fl or foll	follow
Inc	increase(ing)
K1	knit 1
K1b	knit 1 in row below
K2 tog	knit 2 together
lp(s)	loop(s)
LS	left side
M1	make 1
MC	main color
pc	popcorn
P1	purl 1
P1 tbl	purl 1 through back of loop

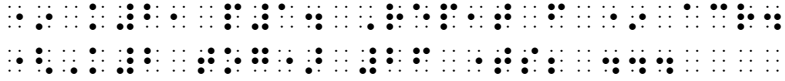
Stitch Abbreviation	Meaning
pat or patt	pattern
pssso	pass slipped stitch over
puk	pick up and knit
pw	purlways
R	right
rem	remaining
rep	repeat
r.h.	right hand needle
rnd(s)	round(s)
RS or Rt side	right side
sk	skip
SK2P	slip 1, knit 2 together, pass slip stitch over
SKP	slip 1, knit 1, pass slip stitch over
sl	slip
sl 2 k	slip two stitches knitways
sl 2 p	slip two stitches purlways
ss or sl st	slip stitch
st(s)	stitch(es)
St st (st-st)	stockinette stitch
tbl	through back of loop
tog or tgr	together
wf	wool forward
wrn	wool round needle
WS	wrong side
yo	yarn over
yrn	yarn round needle
*	asterisk
**	double asterisk
***	triple asterisk

2.1.2 If asterisks and/or parentheses are used, include the following in the abbreviation section:

- * Repeat whatever follows the * as many times as specified.
- () or [] Do what is in parentheses or brackets the number of times indicated.

Example 2-1: Use of Asterisk

```
* k2, p1. Repeat from * across.
(K2 tog) 26 times; ...
```



3.1 Crochet Abbreviations

3.1.1 **Note:** Some of the knit abbreviations will apply to both knit and crochet patterns. The following are specific to crochet patterns. The list is not universal or exhaustive.


Stitch Abbreviation	Meaning
Alt	alternate(ly)
bet	between
Ch	chain
cl	cluster
cont	continue
dc	double crochet
dch(s)	double chain(s)
dtr	double treble or triple
grp(s)	group(s)
H dc or hdc	half double crochet
h.tr or htr	half treble or triple
p	picot
sc	single crochet
t-ch(s)	turning chain(s)
sp	space
Tr(c)	treble or triple crochet
Tr Tr or t.tr	triple treble or triple triple
xdc	crossed double crochet

4.1 Braille-Specific Guidelines

4.1.1 Abbreviations within a pattern are to be contracted according to the rules in UEB §10.

Example 4-1: Abbreviations

```
st., st, sts, dch(s)
```



4.1.2 For *Knit Patterns* there are to be no spaces between a stitch abbreviation and the number that follows. For *Crochet Patterns*, follow print for spacing.

Example 4-2: Knit Pattern

K 2, P 5 to the end of the row.
 k2, p5 to the end of the row.
 BO3 at end of the row.

Example 4-3: Crochet Pattern

3 dc into first sc, *(1 sc, 3 ch, 3 dc)

5.1 Formatting Guidelines

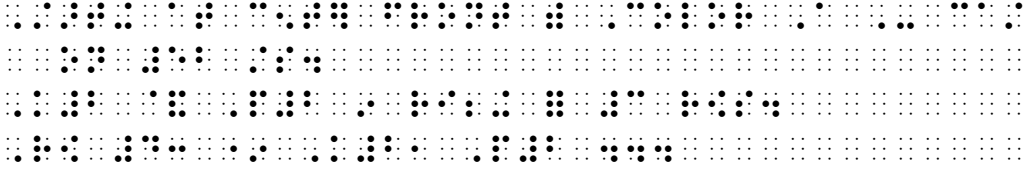
- 5.1.1 Any beginning information or instructions—such as materials, gauge, size of needles/hooks, etc.—should begin in cell 1 with runovers in cell 3 (from now on shown as 1-3).
- 5.1.2 Each “Row” or “Round” (or “Next row”) should be in 1-3. This format should be followed even if the print pattern runs everything together.

Example 5-1: Pattern Formatting

Starting at top, cast on 5 sts. 1st row: * *K in front and back of next st – an inc made*. Repeat from * across – 10 sts. 2nd row: Purl. 3rd row: Repeat first row – 20 sts.

Example 5-2: Formatting Pattern Sections

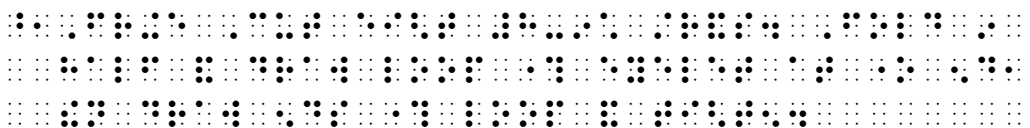
Starting at center front with Color A – cast on 52 sts. K2 & P2 in ribbing for 3 rows.
Row 4: * K2, P2 ...



- 5.1.3 For the different sections of a pattern—such as SLEEVE, ARM, FRINGE, etc.—each section must be preceded and followed by a blank line, and be in 1-3.
- 5.1.4 If the section title in print (SLEEVE, ARM, etc.) is on a separate line from the instructions that follow, begin the section title in cell 1 and continue the instructions on the same line as the title. Follow print for capitalization and typeform.

Example 5-3: Pattern Sections

Fringe
Cut eight 8-inch strands. Fold in half and draw loop through eyelet at one end, then draw ends through loop and tighten.



6.1 Knit and Crochet Chart Patterns

- 6.1.1 Knit and crochet patterns will often show a visual chart to illustrate what color strand or type of stitch should be used for each individual stitch.

Whenever possible, the transcriber should fully reproduce these charts using braille symbols in a key to show the reader which stitches/colors should be used. These keys will be shown in the print pattern. (See *Examples 6-1* and *6-2*.)

- 6.1.2 A chart and key should not be divided between braille pages if they are short enough to fit on one page. However, if necessary, the key may be on one page and the chart on the

following page, in order to keep the entire chart on one page. If a chart is too long to fit on one page, separate it at an appropriate point—do not divide a row/round between braille pages.

- 6.1.3 Each row should be numbered on alternating sides, *regardless of whether row numbers appear in print*, leaving two blank cells between a row number and the beginning of a row. (See *Examples 6-1* and *6-2*.) **Note:** The numeric indicator is used to prevent the row number from being mistaken as a symbol in the chart.
- 6.1.4 The numbers in the margins in the PRINT PORTION of *Examples 6-1* and *6-2* were not included in the original pattern, but are used here for reference only, to show where the rows begin in print and how they correspond to the braille version.
- 6.1.5 Stitches for *odd* rows are transcribed from right to left; *even* rows are transcribed from left to right. In print, the first row begins at the bottom right; the braille row must follow this direction as well. In other words, row 1 will start at the *right* margin of the bottom line. (See *Example 6-1*.)
- If each of the rows in a pattern will fit on one braille line, the stitches should be aligned vertically as they are in print. (See *Example 6-1*.)
 - If the rows will not each fit on one braille line, runovers are transcribed as follows. End the line before the runover one cell before the ending margin. Because the rows are read from the bottom to the top of the page, the runover should be transcribed on the line above the beginning of the row. A runover is indented two cells from the beginning of that row's margin. (See *Example 6-2*.)
 - If the chart is to begin at the bottom of the page, the first line of the chart should be on line 24, and not on line 25 which should be left blank according to *Braille Formats*.
 - If the pattern is extremely complicated and/or the transcriber feels that it will extend for so many pages that it will make the chart difficult to read, the transcriber

may decide to convert the chart into written instructions and begin with the bottom row of instructions, proceeding to the top row as in *Example 6-3*.

- 6.1.6 When a large chart pattern uses more than one braille page, a transcriber's note is required to let readers know on which page they will find Row 1.
- 6.1.7 It is recommended that the full cell ⠠⠠⠠⠠, hyphen ⠠⠠⠠⠠, letters l ⠠⠠⠠⠠, g ⠠⠠⠠⠠, and x ⠠⠠⠠⠠, and any other unique braille signs be used to represent the print symbols in the key.
- 6.1.8 Chart patterns can also be knitted using circular needles. Instructions for circular needles may vary from those for straight needles. Follow the print instructions for transcribing the chart into braille, or writing out the instructions.
- 6.1.9 Crochet chart patterns are very similar to knit charts, but the transcriber should follow instructions given for any particular pattern.

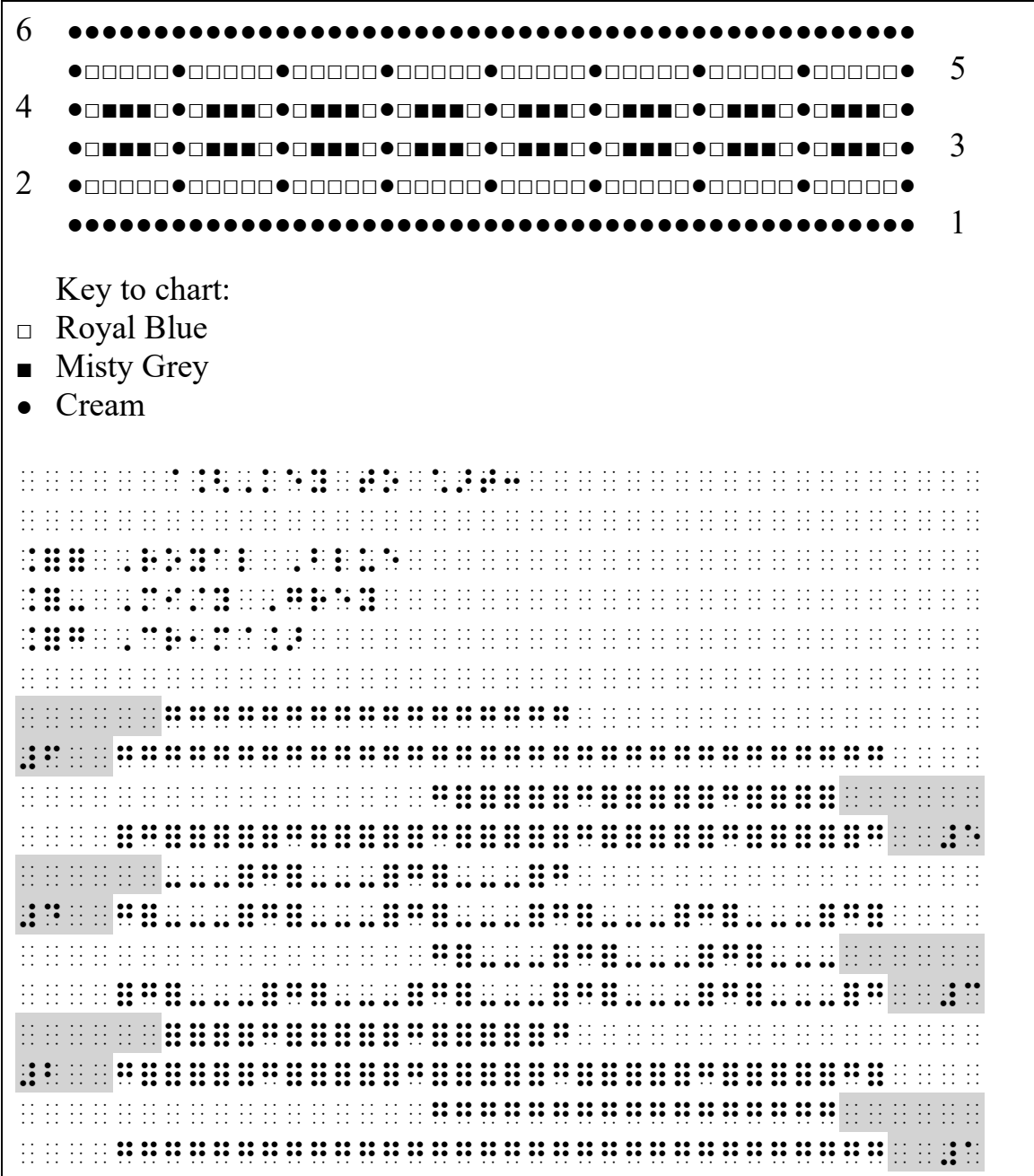
Example 6-1: Formatting Knitting Chart

	●●●●●●●●●●●●●●●●●●●●●●●●□	7
6	□□□□□□□□□□□□□□□□□□□□□□□□○	
	□□□□■●●●●●●●●●●●●●●●●●●●●●●●□□□□□	5
4	□□□□■●●●●●●●●●●●●●●●●●●●●●●●□□□□□	
	□□□□■●●●●●●●●●●●●●●●●●●●●●●●□□□□□	3
2	□□□□□□□□□□□□□□□□□□□□□□□□○	
	●●●●●●●●●●●●●●●●●●●●●●●●●●●●●□	1

Key to chart:

- knit MC
- knit CC
- purl with chenille
- k1, p1, k1 all in 1 st

Example 6-2: Knitting Chart with Runovers



Example 6-3: Chart Converted into Written Instructions

Materials needed: 2 skeins each white and red worsted weight yarn

Key to chart:

- White
- Red

Cast on 14 sts.

Starting with white, work in St stitch according to the chart below.

□□■□□□□□■□□□□□	13
□□■□□□□□■□□□□□	
□■□□□□□□■□□□□□	11
■□□□□□□□□□□□□□	
■□□□□□□□□□□□□□	9
■□□□□□□□□□□□□□	
□■□□□□□□□□□□□□	7
□□■□□□□□□□□□□□	
□□□■□□□□□□□□□□	5
□□□■□□□□□□□□□□	
□□■□□□□□□□□□□□	3
□■□□□□□□□□□□□□	
■□□□□□□□□□□□□□	1

